

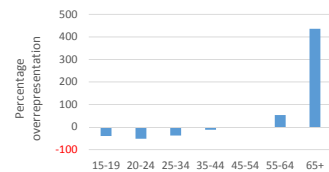


An actuary and the land

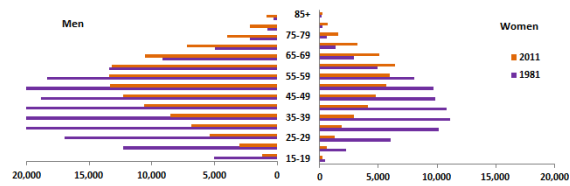


Older,

- Deloitte over representation
 - Average 52 (+12)



- Australian Farm Institute argues
 - Compare like with like roles
- ABS has the evidence

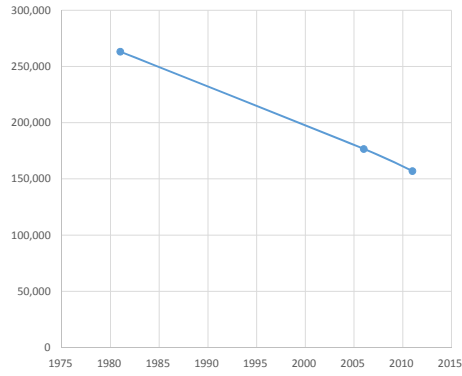


Barton Consultancy





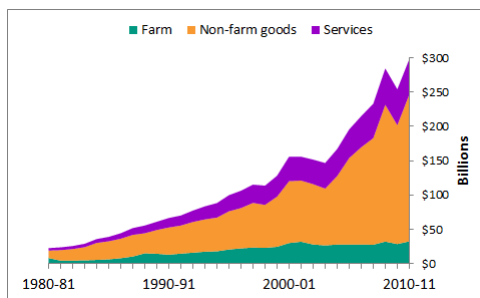
Fewer,



Barton Consultancy



Less relevant

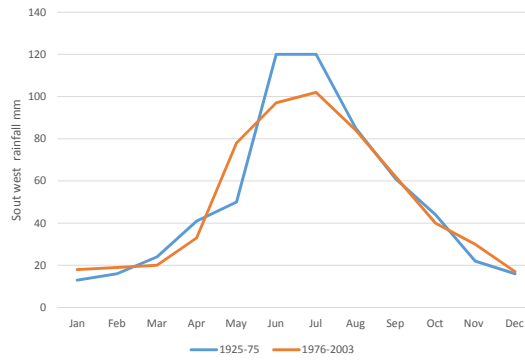


Barton Consultancy





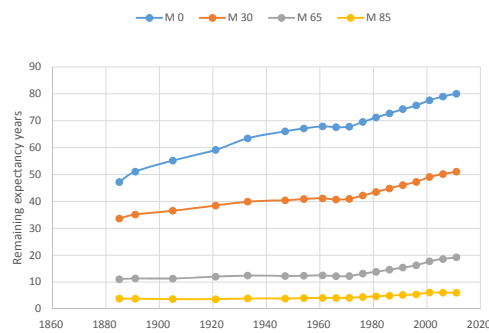
And it's dryer



Barton Consultancy

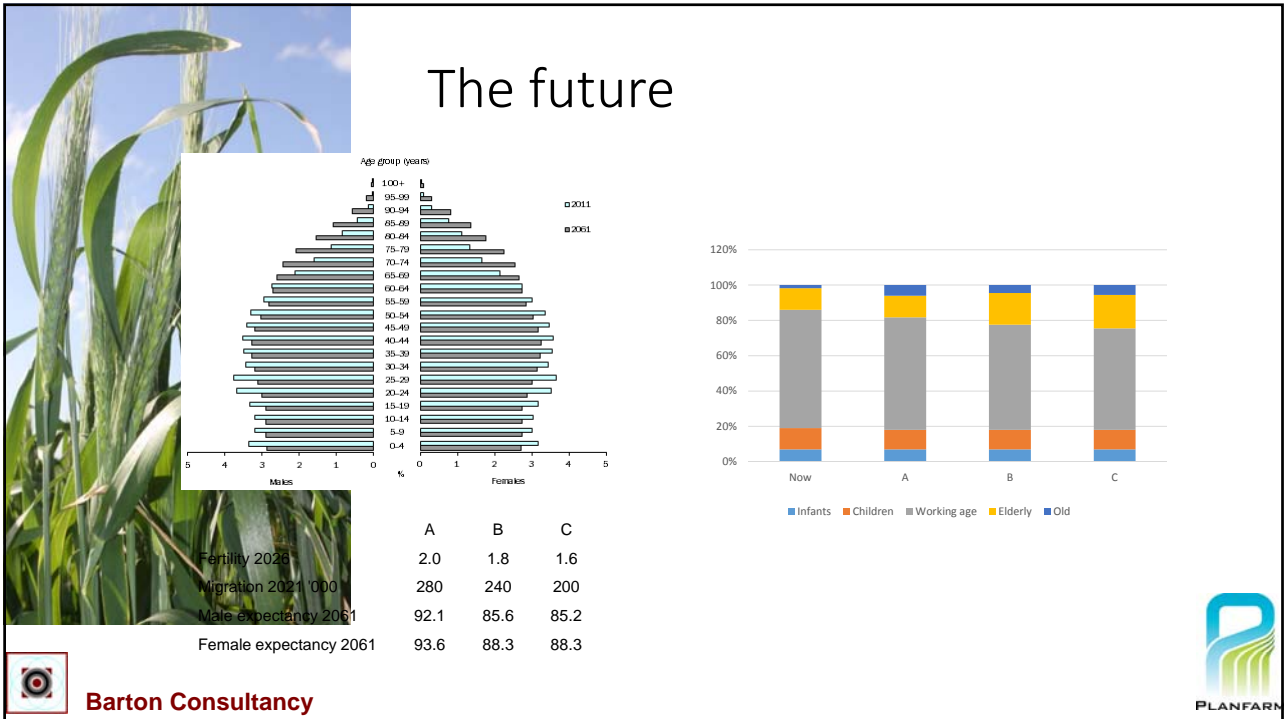


Wider Australia



Barton Consultancy





Barton Consultancy

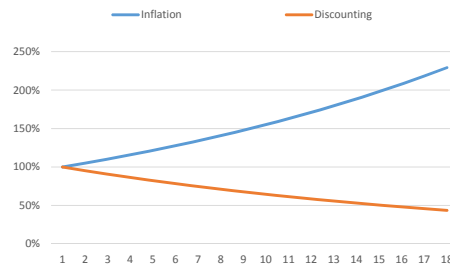


Barton Consultancy





More lines



- The essence of actuarial work
 - Survival
 - Decrements
 - Discounting
 - Inflation
 - Probability and
 - Quantum



Barton Consultancy



On farm examples

- Cattle population estimates
- Oyster production
- Plantations



Barton Consultancy





Off farm examples

- Family law
- Succession planning
 - Annuities
 - Life and remainder interests
 - Separation of cropping from land
 - Retirement villages



Barton Consultancy

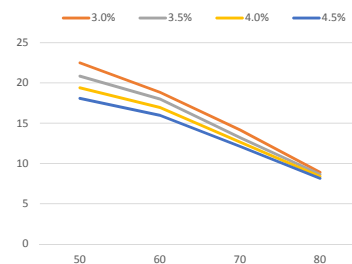


Annuities

- Commitment to pay an amount for life.

Depends on

- Gender
- Mortality assumptions
- Indexation and
- Earning assumptions



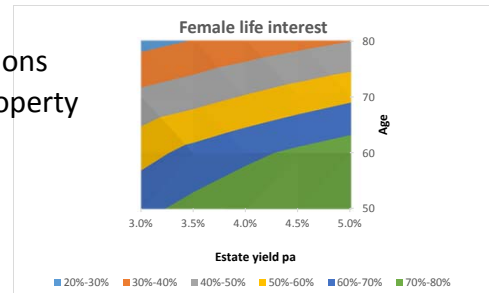
Barton Consultancy





Life and remainder interests

- Any property can be split into a lifetime right to receive the income and the remaining capital value on death. Values depend on
 - Gender
 - Mortality assumptions
 - Earnings on the property



Barton Consultancy



Superannuation

- Tax concessions on entry
- Tax concessions on earnings
- Transition to retirement
- Tax treatment on death
- SMSF ?



Barton Consultancy





Questions and comments



Dennis Barton Director
Barton@Actuary.com.au
www.Actuary.com.au
0417 937 854



Barton Consultancy

